

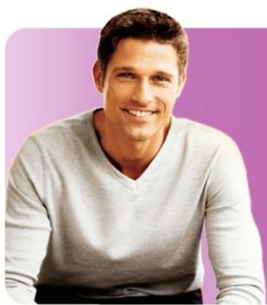
SharePoint 2013 Development Training

Courses

SharePoint Server 2013

Certifications

MCSE



Corporate Trainer's Profile

Corporate Trainers are having the experience of 4 to 12 years in development , working with TOP CMM level 5 companies (Project leader / projects Manager) qualified from NIT/IIT/IIM and work exp in USA and UK.



Capability Maturity Model level Project Standard***:-

The Capability Maturity model (CCM) is a method for evaluating the maturity of Organizations on a scale of 1 to 5.

Get the oppertunites to work on client Projects of US/UK, which follow the all standard of CMM level 5 Company.



SHAREPOINT 2013 DEVELOPMENT

Audience Profile:

This course is for those people who have couple of years of development experience on ASP.NET with C#.

Career Path:

After completing this course you will be able to take up the roles of

- SharePoint Developer

Duration

1.5 Month

Working with SharePoint 2013 App Model

- Apps for Office
- Apps for SharePoint
- Working on Cloud

Accessing content with REST and o Data

- Mapping REST URLs against SharePoint resources
- Reading and writing REST data with jQuery
- Making cross-domain calls with SP .Request Executor

Three Apps for SharePoint 2013 Deployment Models

- SharePoint Hosted
- Auto hosted
- Provider-hosted

Working with Server Object Model

- Different Approaches of Developing Applications for SharePoint
- Overview of Server Object Model (SOM)
- Importing Data from a Text File into a SharePoint Custom List
- Reading records of a Custom List programmatically
- Filtering records of a Custom List programmatically
- Using CAML Queries to filter records of a Custom List
- Using CAML Builder tool
- Creating Site Collections programmatically
- Creating Sub Sites Programmatically
- Displaying List of Lists of a Site
- Importing data from SQL Server Database into a SharePoint Custom List Programmatically
- Loading data of a Custom List into Generic Lists
- Displaying List of Sub sites of a Site Collection
- Importing data from a .CSV file into a SharePoint Custom List Programmatically
- Modifying structure of a Custom List Programmatically
- Accessing Quick Launch Item Collection Programmatically
- Using SharePoint SOM Core Objects
- SP Farm
- SP Service
- SP Web Application
- SP Site
- SP Web
- SP Context

Developing Lists and List Items Programmatically

- Adding an SP List Item Object to an SP List Programmatically
- Modifying an Existing SP List Item Object Programmatically
- Recycling an SP List Item Object Programmatically
- Deleting an SP List Item Object Programmatically
- Adding Records to a Custom List using Feature Event Receiver
- Creating a Site using Feature Event Receiver

Creating List Definitions Programmatically

- Creating List Instances Programmatically
- Applying Validations on SP Field Programmatically
- Adding Fields to List Instance Programmatically
- Adding Fields to Default View Programmatically

Developing Content Types, List Definitions, List Instances

- Creating Content Types Programmatically
- Creating List Definition From Content Type Programmatically
- Creating List Instance Programmatically

Working with SharePoint Web Services and Introduction to Web Part Development

- Overview of SharePoint Web Services
- Consuming WEBS Web Service
- Consuming DWS Web Service
- Consuming LISTS Web Service
- Overview of Web Parts
- Creating a Simple Web Part Programmatically
- Deploying Web Part
- Testing Web Part
- Inspecting web.config file

Developing Web Parts

- Creating a Web Part that displays content Dynamically
- Deploying and Testing Web Part
- Creating a Web Part with ASP.NET standard Controls
- Creating a Web Part with the help of HTML tables
- Creating a Web Part with Grid View Control
- Creating Custom Properties for Web Parts
- Creating Custom Property with Drop Down List
- Creating a web Part that displays data from a Generic List
- Creating a Web Part that displays data from an XML file
- Creating a Web Part that displays the data of selected custom list in a dropdown list
- Creating Visual Web Parts
- Differences between Web Parts and Visual Web Parts
- Why Visual Web Parts cannot be deployed as Sandboxed solutions

Setting Up Permissions Programmatically

- Overview of Permissions
- SharePoint Groups
- Permission Levels
- Using SP User class
- Using SP Group class
- Using SP Role Definition class
- Using SP Role Assignment class
- Creating Groups and assigning Permissions Programmatically
- Turning Off Permissions upon Deactivating Feature

Working with List and List Item Event Receivers

- Overview of Event Receiver
- Different Types of Events
- Creating a List Item Event Receiver
- Creating a List Event Receiver
- Attaching Event Receivers
- Creating Application Pages
- Redirecting the Users to Error Application Page upon Validation fails
- Logging Events to a Log File

Developing a Custom Ribbon Control

- Developing a Custom Action for a Ribbon Control
- Setting the Custom Ribbon Control with Command UI Definition
- Setting the Ribbon Control Behaviour with the Command UI Handler Properties
- Setting the Appearance and Visibility of the Ribbon Control
- Setting the Location of the Custom Ribbon Control
- Deploying and Testing the Custom Ribbon Control

Developing BCS Applications using Visual Studio

- Developing Business Data Connectivity Model in Visual Studio
- Working with the Service Class and Entity Class
- Developing the CRUD Methods with the Design Model
- Debugging the BCS Application in Visual Studio
- Deploying and Testing Our BCS Application

Working with Client Object Model (COM)

- Overview of Client Object Model
- Loading Object Instances
- Loading Selective Properties
- Using Client Context Class
- Using Load Function
- Using Execute Query function
- Creating a BLOG Web Site using COM Programmatically
- Creating a Custom List using COM Programmatically
- Adding Records To a SharePoint List using COM in a Win Forms Application
- Manipulating data with CSOM
- Executing CSOM code with JavaScript and .NET
- Specifying required data with Load()
- Dispatching a request with Execute Query() and Load Query()

Securing SharePoint apps

- Requesting permissions with the app manifest
- Authorizing access with Oath 2.0
- Creating high-trust apps with S2S protocol
- Establishing a security context with token helper

Developing Sandboxed Solutions

- What are Sandboxed Solutions
- Sand Box Solutions Architecture
- Sandbox Solutions Monitoring, Management
- Limitations of Sandboxed Solutions
- Benefits and Other Considerations with Sandboxed Solutions
- Working with Sandboxed Solutions in Visual Studio and SharePoint 2010
- Deploying and Testing Sandboxed Solutions
- Sand Box Solutions Full Trust Proxies
- Creating List Definitions using CAML

Developing REST Services

- Working with a SharePoint List using REST
- Adding Data to a SharePoint List using REST
- Updating Data of a SharePoint List using REST

WCF with SharePoint

- Overview of WCF
- Creating a WCF Service
- Publishing a WCF Service
- Consuming a WCF Service

Developing Timer Jobs Programmatically

- Creating a Timer Job Dynamically
- Scheduling a Timer job Dynamically
- Installing Timer Job
- Activating Timer Job
- Testing Timer Job
- Debugging Timer Job

Developing Features

- Overview of Features
- Uploading Documents to a Document folder using Feature
- Installing Feature
- Activating Feature
- Deactivating Feature
- Uninstalling Feature
- Adding Custom Links to Site Actions menu using Feature
- Hiding Features
- Creating Activation Dependency Feature using C#
- Creating Activation Dependency Feature using CAML
- Creating Property Bags using Features

Working with Document Objects and Creating Site Definitions

- Working with Document Library Programmatically
- SP Document Library, SP Folder and SP File Objects
- Programmatically Creating a Document Library
- Turn Off Versioning for a document library dynamically
- Deploying and Testing the Documents Application
- Working with Site Templates
- Site Definitions vs. Site Templates
- Creating a Custom Site Definition to Set the Master Page URL Programmatically
- Deploying and Testing Our Custom Master Page Site Definition
- Creating Sites Based on Our Site Definition

SharePoint Workflows

- Overview of Workflows
- SharePoint 2013 Out-of-the-Box Workflows
- SharePoint Designer 2013 Workflows
- List Workflows
- Reusable Workflows
- Site Workflows
- Visual Studio 2013 Sequential Workflow
- Managing Workflows
- Assigning Workflows
- Workflows Above and Beyond

SharePoint Business Connectivity Services

- Using Business Connectivity Services to integrate LOB (ERP, SAP etc.) Applications
- Creating External Content Types and External Lists for BCS

Developing Branding Solutions and Delegate Controls

- Apply theme to a Web Dynamically
- Customizing Master page using SharePoint Designer 2013
- Dynamically Applying Master Page to a Web
- Deploying Custom Master Page using a Solution Package
- Creating a Branding Solution with Visual Studio 2010
- What is a Delegate Control
- What is Small Search Input Box delegate control
- Overriding a Delegate Control with a Custom Control
- Deploying and Testing Custom Delegate Control

Share Point Business Intelligence

- Using Excel Services
- Scorecards, KPIs, Reports
- PerformancePoint Server Dashboard

Using SharePoint Designer

- Creating Custom Site Pages
- Creating Data View
- Filters
- Customizing Master Pages
- SharePoint Designer Workflows
- Creating External Content Types

Developing Custom Dialogs

- Create a Custom Dialog for Data Entry
- JavaScript and the Client Object Model
- Modal Dialogs
- Creating a Custom Dialog
- Controlling the Client Side Behaviour and Visibility of the Dialog
- Adding Server Side Functionality to the Dialog
- Deploying and Testing the Dialog User Control

Dynamically Modifying Navigation

- Customizing Top Link Bar Programmatically
- Customizing Quick Launch Bar Programmatically
- Customizing Menus and Custom Actions
- Hiding the Left Navigation Programmatically
- Adding Links to the Top Link Bar Programmatically
- Adding Links to the Quick Launch Bar Programmatically
- Deploying and Testing the Custom Navigation Feature

ECMA Script Implementation

- Overview of ECMAScript
- Using ECMAScript in Web Parts
- Implementing on Success Function
- Implementing on Fail Function

Silverlight with SharePoint

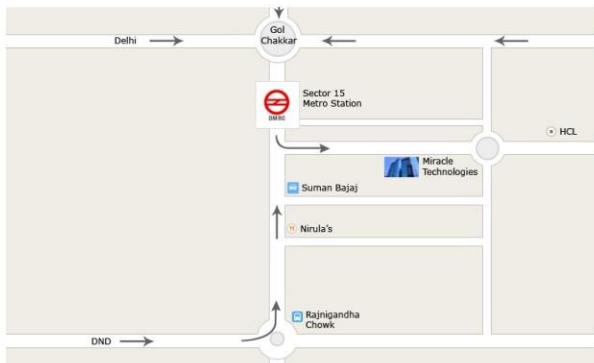
- Overview of Silverlight Implementation
- Using Load Function to load resources
- Adding fields to a custom list using Silverlight Implementation
- Exception handling with Silverlight Implementation
- Cross Domain Policy

Features:-

- ✔ 1. Task-Oriented, Competency-Based Course Design
- ✔ 2. A Truly Hands On Learning Experience – At Least 50% Lab Time
- ✔ 3. Courseware Ownership & Control
- ✔ 4. Instructors With Extensive Experience of the corporate , having the Certifications.
- ✔ 5. On line Training /On site training is available
- ✔ 6. Small Class Size ,proper doubt classes by the assistance
- ✔ 7. A Cost-Effective, Total Solution
- ✔ 8. Training will get the confirmation letter and Industrial Live Project (For pursuing students to submit the letter in college.)
- ✔ 9. FREE Assessment test for job eligibility.
- ✔ 10.Placement tie with the companies.

Mobile No: +91 9311305845
+91 9311305846
+91 9311305847

Miracle Corporate Solutions Pvt. Ltd.
B-12, 1st Floor,
Behind Delite Showroom,
Adjacent to Metro Station,
Near Gol Chakkar, Sector-2 Noida, UP (India)
PH: +91-120-4040104



- Sector 15 Metro Station**
- Adjacent to Metro Station**
- Miracle B-12, Sector-2**

Please mail to:
sales@miracleindia.com

| Technologies |
|---------------------------|
| JAVA |
| .Net |
| Embedded |
| Testing |
| PHP |
| Mainframe |
| iPhone |
| Android |
| Oracle |
| Sharepoint |
| Biztalk |
| Hadoop |
| Cloud |
| Matlab |
| XML |
| Web Development |
| Telecom |
| C/C++ |
| Robotics |
| VLSI |
| Networking |
| Linux |
| Windows |
| Data Warehousing |
| Plc Scada |
| CAD/CAM |
| SMO+SEO |
| animation |
| Flex Ria |
| SOA |
| SQL Server |
| Cyber Security |
| Postgre SQL |
| Business Analysis |
| Report |
| Prince |
| ITIL |
| Agile Scrum |
| PMP |
| Management And Leadership |
| Communication |
| HR Speacilist |