

SharePoint 2013 Administration Training

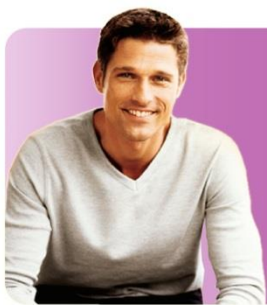


Courses

SharePoint Server 2013

Certifications

MCSE



Corporate Trainer's Profile

Corporate Trainers are having the experience of 4 to 12 years in development , working with TOP CMM level 5 companies (Project leader / projects Manager) qualified from NIT/IIT/IIM and work exp in USA and UK.



Capability Maturity Model level Project Standard***:-

The Capability Maturity model (CCM) is a method for evaluating the maturity of Organizations on a scale of 1 to 5.

Get the oppertunites to work on client Projects of US/UK, which follow the all standard of CMM level 5 Company.



Audience Profile:

This course is for Consultants and IT Professionals, who need to understand how to plan, implement and configure SharePoint. This course is mainly targeted for administrators and support team.

Career Path:

After completing this course you will be able to take up the roles of

- SharePoint Administrator

Duration

1 Month

Course Outline

Introduction & Architecture

- Understanding Single Server Topology
- Understanding Small Farm Topology
- Understanding Medium Farm Topology
- Understanding Large Farm Topology
- Standalone Installation
- Farm Installation
- Installing SQL
- Working with Central Administration

SharePoint 2013 Administration Basics

- Permission Levels
- SharePoint Groups
- Policies
- Application Management
- Exploring CA

Creating Web Applications and Site Collections

- Understanding Web Applications
- Creating Web Applications
- Understanding Service Applications
- Site Collection Logical Architecture
- Planning Site Collections
- Creating Site Collections

Document Management

- Document Libraries
- Check Out / Check In
- Content Types
- Document Versioning
- Document Center

Working with Lists

- Creating Lists
- Managing List Columns and Views
- Using Content Types in List
- Lookups and Managed Metadata Columns

Working with Wikis, Blogs and Surveys

- Creating and Configuring Wikis
- Blogs
- Surveys
- Discussion Boards etc

Managing and Extending Web Applications

- Extending and Deleting Web Applications
- Managing General Settings
- Managing Features
- Managed Paths
- Security Settings

Managing Site Collections and Databases/ Content Databases

- Overview of Scalability
- Managing Your Content Databases
- Add Multiple Content Databases with single Web Application
- Move Site Collections in Databases

SharePoint 2013 Service Application Architecture

- Configuring and Creating Service Applications
- Configuring Enterprise Managed Metadata Service Application
- Configuring Search Service Application
- Configuring Business Connectivity Service Application
- Configuring User Profile Service Application
- Configuring Excel Service Application
- Configuring Secure Store Service Application

Enterprise Managed Metadata

- Creating Terms and Term Stores
- Using Managed Metadata in Lists and Libraries
- Import and Export Terms
- Design and Best Practices

Search Administration

- SharePoint Search Farm Architecture with multiple Servers
- Defining Content Source, search scopes, best bets and keywords
- Using Enterprise Managed Metadata with Search
- Managing Search
- Customizing Search

Business Connectivity Service

- Business Connectivity Services Architecture and Security Model
- Interact with (Read/Write) external data systems such as ERP, CRM and other Line of Business
- BCS Web Parts

People and Social Networking

- User Profile Service Configuration
- User Profile Properties Management
- My Sites
- People Search

Business Intelligence

- Key Performance Indicators (KPIs) and Dashboards
- PerformancePoint Services
- Excel Services
- Visio Services

Secure Store Service

- Configuring Secure Store Service
- Consuming Secure Store Service

Disaster Recovery

- Disaster Recovery Options
- Backing up SharePoint Content DBs
- Restoring SharePoint Content
- High Availability Options
- Ensuring a Complete Farm Recovery

SharePoint 2013 Security

- Claims Overview
- Differences between Windows and Claims authentications
- Setting up a SharePoint Web Application to use Claims authentication
- Setting up a Membership Provider
- Editing Web.config to use Membership Provider

Upgrade and Migration

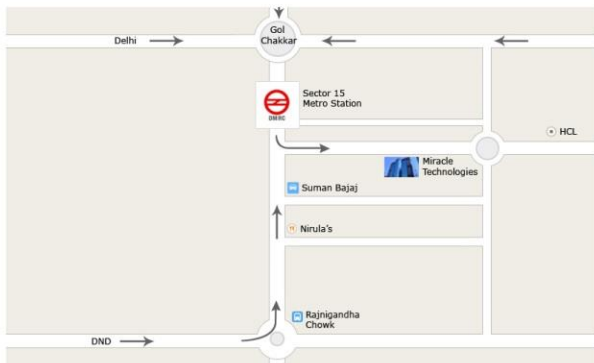
- DB Attach Migration
- In Place Migration

Features:-

- ✔ 1. Task-Oriented, Competency-Based Course Design
- ✔ 2. A Truly Hands On Learning Experience – At Least 50% Lab Time
- ✔ 3. Courseware Ownership & Control
- ✔ 4. Instructors With Extensive Experience of the corporate , having the Certifications.
- ✔ 5. On line Training /On site training is available
- ✔ 6. Small Class Size ,proper doubt classes by the assistance
- ✔ 7. A Cost-Effective, Total Solution
- ✔ 8. Training will get the confirmation letter and Industrial Live Project (For pursuing students to submit the letter in college.)
- ✔ 9. FREE Assessment test for job eligibility.
- ✔ 10.Placement tie with the companies.

Mobile No: +91 9311305845
+91 9311305846
+91 9311305847

Miracle Corporate Solutions Pvt. Ltd.
B-12, 1st Floor,
Behind Delite Showroom,
Adjacent to Metro Station,
Near Gol Chakkar, Sector-2 Noida, UP (India)
PH: +91-120-4040104



- Sector 15 Metro Station**
- Adjacent to Metro Station**
- Miracle B-12, Sector-2**

Please mail to:
sales@miracleindia.com

Technologies
JAVA
.Net
Embedded
Testing
PHP
Mainframe
iPhone
Android
Oracle
Sharepoint
Biztalk
Hadoop
Cloud
Matlab
XML
Web Development
Telecom
C/C++
Robotics
VLSI
Networking
Linux
Windows
Data Warehousing
Plc Scada
CAD/CAM
SMO+SEO
animation
Flex Ria
SOA
SQL Server
Cyber Security
Postgre SQL
Business Analysis
Report
Prince
ITIL
Agile Scrum
PMP
Management And Leadership
Communication
HR Specailist